

ATrack AX5

Plug & Play GPS Vehicle Tracker



ATrack AX5

ATrack AX5 OBD is the basis for the ultimate solution for fleet managers in need of monitoring location, speed, maintenance scheduling and parameters available on the OBD port of vehicles. In addition, it can be installed in matter of seconds which substantially reduces the high cost of installation!

Product features

- Quad band GSM SMS/GPRS(TCP)
- Plug & Play installation
- Accurate odometer readings from the vehicle
- Fuel used data from the vehicle **
- Fuel level indicator from vehicle **
- Coolant temperature from vehicle **
- Malfunction Indicator lamp (engine check light) **
- Engine RPM
- Engine load percentage **
- Ignition status from the vehicle
- GSM Jamming Detection & reporting *
- Harsh Driving Detection *
- Speed and Idle Reporting
- Geofencing

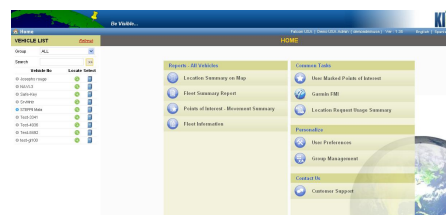
* Coming soon on Kliko platform

** For compatible vehicles only

Applications

- Real time online tracking
- Fleet management / monitoring
- Scheduled and Preventive maintenance
- Extending life-time of the vehicle
- Security / emergency services
- Territory management
- Personalized drivers logbook
- Route verification
- Trip management / distance calculations
- Theft protection
- Toll collection / pay as you drive
- Compatible with KLIKO

Kliko Server Solution



www.kliko.us

<http://www.info-spectrum.com/M2MSolutions/>

Technical Specifications

ATrack AX5 OBD	
GSM/GPRS Specification	
GSM Module	Quad band (850/900/1800/1900MHz)
Communication	SMS/USSD/GPRS /TCP/UDP
GSM Antennas	Internal Type
GPS Specification	
GPS Receiver	50 Channels, L1 Band, C/A Code
Sensitivity	-159dBm
Accuracy	2.5m CEP
Assisted GPS	Supported
OBD-II Specification	
Supported Protocol	ISO 15765-4 (CAN) ISO 14230-4 (KWP2000) ISO 9141-2 (Asian, European, Chrysler vehicles) SAE J1850 VPW (GM vehicles) SAE J1850 PWM (Ford vehicles)
Electrical Characteristics	
Power Source	8-20 VDC
Power Consumption	Operational 140 mA @ 12VDC (Average) Sleep 18 mA @ 12VDC Deep Sleep <2 mA @ 12VDC
Mechanical Specification	
Dimension	50 x 46 x 25 mm
OBD Connector	SAE J1962 Type A
Weight	54g (Include OBD Option)
Environmental Characteristics	
Operation Temperature	-25 ~ +70°C
Storage Temperature	-40 ~ +85°C
Humidity	5 ~ 95%